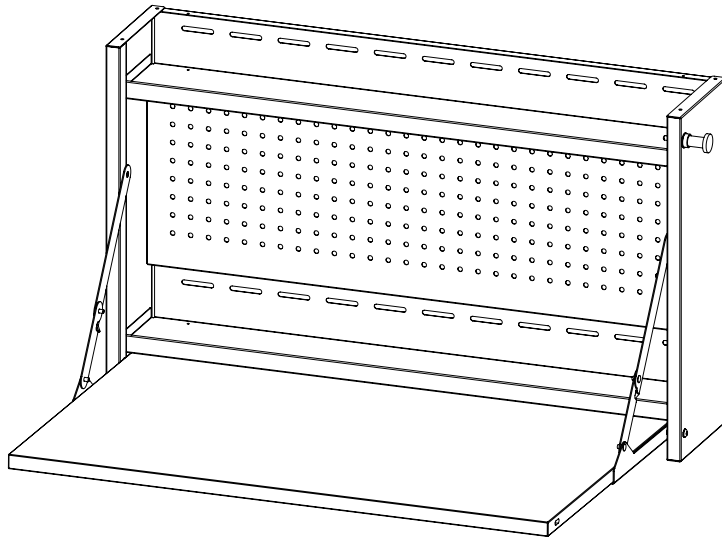


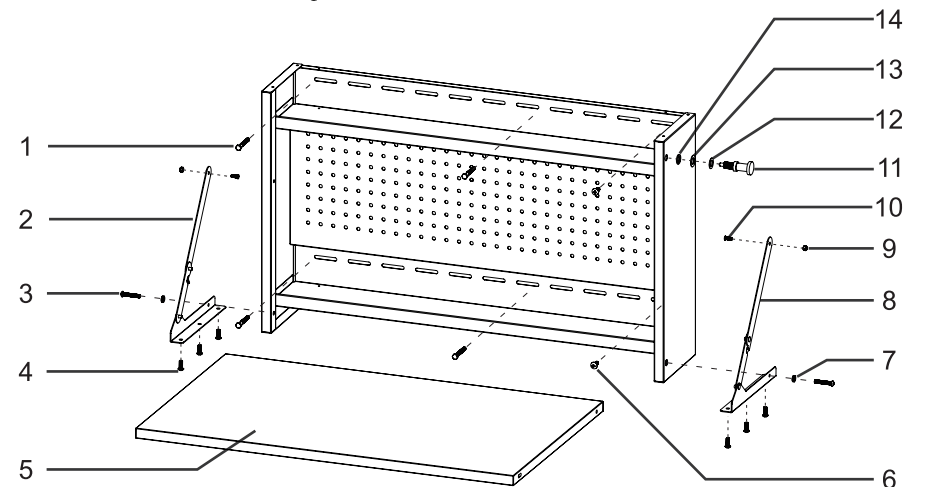
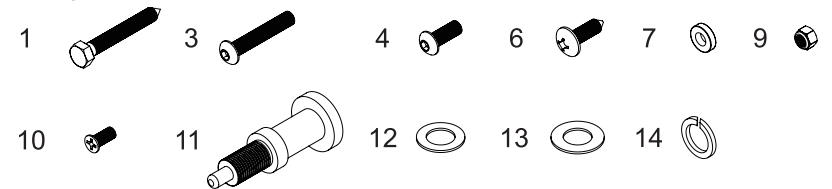
32" FOLDING WORKTABLE MANUAL

PARTS LIST

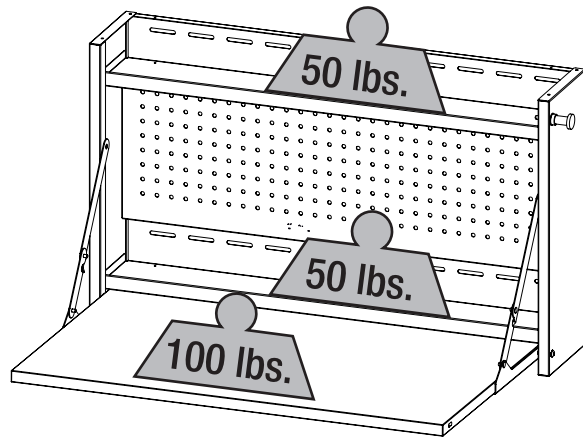
Ref#	Description	Part#	Qty
1	M6 x 40 hex tapping bolt	320328	6
2	Mechanical strut (Left)	123971	1
3	M6 x 35 hex socket head screw	320354	2
4	M6 x 16 hex socket head screw	320213	6
5	Worktable	307070	1
6	M6 x 16 phillips head tapping bolt	320331	2
7	Plastic washer	314304	2
8	Mechanical strut (Right)	123970	1
9	M5 hex nylon locknut	323017	2
10	M5 x 14 counter sink screw	320355	2
11	Locking pin	326205	1
12	Plastic washer	314303	1
13	Washer	324069	1
14	Spring washer	324068	1



Part Drawing:



WEIGHT CAPACITY



- MAXIMUM EACH SHELF WEIGHT : 50LB (22KG)
- MAXIMUM WORKTABLE WEIGHT : 100LB (45KG)
- MAXIMUM PRODUCT WEIGHT : 200LB (90KG)

SAFETY INFORMATION

- This product is intended for indoor use only.
- Use at least two people to move, assemble or install this product. Any assembly or maintenance of the product must be carried out by adults only.
- Do not sit or stand on or allow children to climb, sit or stand on the assembled product.
- Check all nuts and bolts periodically for tightness. When required, tighten them.
- Ensure the locking pin clicked into place when closing the worktable.
- Do not exceed the recommended weight limits.
- Do not make any modifications to the product.
- Secure the folding worktable properly into at least two wooden wall studs before use. The worktable must be anchored to 2" wooden studs to perform correctly and support the rated weight capacity.

INSTALLATION

WARNING: Two people are required to install the folding worktable on the wall.

NOTE: There are obround holes along the back of the top and bottom shelves. We recommend securing the worktable in six locations – three locations at the top of each shelf.

NOTE: It may be easier to attach a cleat to the wall to help hold the worktable on the wall while you mark the fastening holes. Use two people – one to hold the worktable in place and the other to mark the holes.

Determine and mark the desired height of the worktable on the wall with a pencil. Make sure that the worktable will be at the desired height when it is open.

Use a stud finder to find the wooden stud locations in the wall you will be mounting the folding worktable. Mark their locations with a pencil.

Use these stud locations to mark six holes for fastening the worktable to the wall, three in the top shelf and three in the bottom shelf. We recommend that the worktable be secured to a wall stud at one end and in the seventh holes from that end. The other end without the wall stud can be secured using an anchor.

Draw a line at the top of the worktable. Remove the worktable and place a level along the line you have drawn to make sure the worktable will be level.

Pre-drill holes at the locations you have marked.

While one person holds the worktable in place (again, having a cleat on the wall would help stabilize the installation process), the other person should secure the worktable to the wall using the hardware provided. Use the M6 x 40 hex tapping bolts for securing to wall studs. Use the M6 x 16 phillips head tapping bolt when not securing to a wall stud. Tighten securely.

